

ISHIGAKI ISLAND

The center of the city area

MAP

Approximate distance to the destination

To Euglena Rito (an isolated island) Terminal

Distance: About 3km

About 9 minutes

To the municipal market (Euglena Mall)

Distance: About 2.9km

About 9 minutes

To SAN-A, Maxvalu

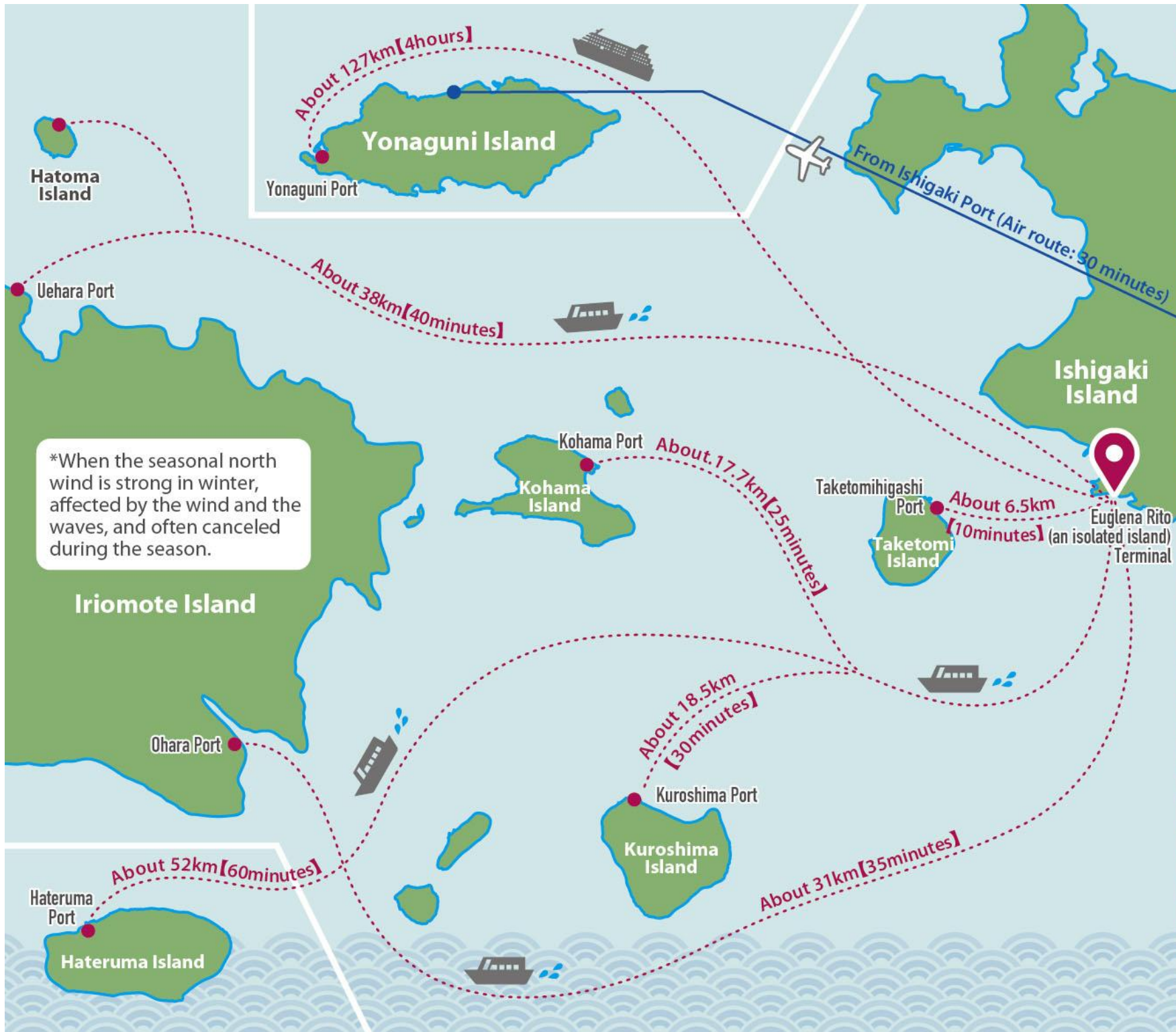
Distance: About 4.9Km

About 14 minutes



YAEYAMA ISLANDS GUIDE

Access from Ishigaki Island to other Yaeyama islands.



YAEYAMA KANKO FERRY Anei Kanko

Taketomi Island	A one-way fare	
	Adult	Child
Travelling time: 10-15 minutes	¥740	¥410

Iriomote Island Ohara Port	A one-way fare	
	Adult	Child
Travelling time: 35-45 minutes	¥2,060	¥1,050

Iriomote Island Uehara Port	A one-way fare	
	Adult	Child
Travelling time: 40-45 minutes	¥2,690	¥1,350

Kohama Island	A one-way fare	
	Adult	Child
Travelling time: 25-30 minutes	¥1,400	¥710

Kuroshima Island	A one-way fare	
	Adult	Child
Travelling time: 25-30 minutes	¥1,510	¥770

Hatoma Island	A one-way fare	
	Adult	Child
Travelling time: 45-55 minutes	¥2,690	¥1,350

Anei Kanko Hateruma Island	A one-way fare	
	Adult	Child
Travelling time: 60 minutes	¥4,070	¥2,040

Fukuyama Kaiun [Marine transport]		
Yonaguni Island	A one-way fare	
	Adult	Child
Travelling time: 4 hours	¥3,550	¥1,780

- Toilet
- Parking lot
- Convenience store
- Gas station
- Supermarket
- Post Office
- Bank
- ATM
- Sightseeing spots
- Police box and police station
- Restaurants
- Cafe
- Lodging facilities
- Taxi
- evacuation site
- Bus
- Ship
- Wi-Fi
- Information center
- Currency Exchange
- School
- General Hospital

The whole map of the city



Information center *Chinese language support available

石垣島



Major annual events

Various entertainments and traditional events are held in Ishigaki and other islands.

- Ishigakijima Marathon**
Mid-January/Sunday every year/
Last Sunday of February every year/
Each place in Ishigaki Island
- Yamaneko Marathon**
The 2nd Saturday of February every year/
Western Iriomote Island
- The 16th Festival**
January 16 in the lunar calendar. Each place
Kuroshima Island
- Cow Festival**
Last Sunday of February every year/
Each place in Ishigaki Island
- Ishigakijima Coral Week**
Mid-March every year
Each place in Ishigaki Island
- Beach opening of Yaeyama**
Mid-March every year/Yaeyama Islands
- Sanzu (coming down to the beach)**
March 3 in the lunar calendar. Each place
- ISHIGAKI Triathlon**
Mid-April every year
- Hatoma music festival**
Early May every year/
Hatoma Island
- Kaijinsai (Sea god festival)/Hari**
May 4th of the lunar calendar/
Each place in Ishigaki Island
- Toubarama Competition**
August 13 in the lunar calendar/
Ishigaki Island
- Shichi festival**
Around from August to September every year in the lunar calendar. Each place
- Yaeyama Festival of Industry and Commerce**
Period Irregular
- GREAT EARTH ISHIGAKI Ride**
Ishigakijima Festival
The 1st Saturday and Sunday/
Iriomote Park
- Yonagunijima Marathon**
Yonaguni Island
- Tanadui festival**
Scheduled for early November/
Taketomi Island

*Please be advised that published events may be rescheduled or canceled without notice.
*The events may be postponed or canceled due to natural disasters such as a typhoon.

I'd like to go to this place.
ここにいききたいです

Do you have a menu in English?
英語のメニューはありますか?

Do you have any recommendations?
おすすめ料理は?

Do you have vegetarian dishes?
ベジタリアン向けのメニューはありますか?

How much is this?
これはいくらですか?

Do you accept credit cards?
クレジットカードは使えますか?

Check, please.
お会計をお願いします

Could you give me a receipt?
領収書をお願いします

Taxi, please.
タクシーをお願いします

How long does it take?
時間はどのくらいかかりますか?

How much is the fare?
料金はどのくらいかかりますか?

Where is a restroom?
トイレはどこですか?



Hirakubozaki Lighthouse



Hirano



Ibaruma

Tamatorizaki Observatory

Distance: 26Km
Traveling time: 30minutes
About 400yen

Inoda Auto Camping Ground



Mt. Kara

Ishigaki Air Port

Distance: 17Km
Traveling time: 30minutes
About 2800yen



Major annual events

Various entertainments and traditional events are held in Ishigaki and other islands.

- Ishigakijima Marathon**
Mid-January/Sunday every year/
Last Sunday of February every year/
Each place in Ishigaki Island
- Yamaneko Marathon**
The 2nd Saturday of February every year/
Western Iriomote Island
- The 16th Festival**
January 16 in the lunar calendar. Each place
Kuroshima Island
- Cow Festival**
Last Sunday of February every year/
Each place in Ishigaki Island
- Ishigakijima Coral Week**
Mid-March every year
Each place in Ishigaki Island
- Beach opening of Yaeyama**
Mid-March every year/Yaeyama Islands
- Sanzu (coming down to the beach)**
March 3 in the lunar calendar. Each place
- ISHIGAKI Triathlon**
Mid-April every year
- Hatoma music festival**
Early May every year/
Hatoma Island
- Kaijinsai (Sea god festival)/Hari**
May 4th of the lunar calendar/
Each place in Ishigaki Island
- Toubarama Competition**
August 13 in the lunar calendar/
Ishigaki Island
- Shichi festival**
Around from August to September every year in the lunar calendar. Each place
- Yaeyama Festival of Industry and Commerce**
Period Irregular
- GREAT EARTH ISHIGAKI Ride**
Ishigakijima Festival
The 1st Saturday and Sunday/
Iriomote Park
- Yonagunijima Marathon**
Yonaguni Island
- Tanadui festival**
Scheduled for early November/
Taketomi Island

*Please be advised that published events may be rescheduled or canceled without notice.
*The events may be postponed or canceled due to natural disasters such as a typhoon.

I'd like to go to this place.
ここにいききたいです

Do you have a menu in English?
英語のメニューはありますか?

Do you have any recommendations?
おすすめ料理は?

Do you have vegetarian dishes?
ベジタリアン向けのメニューはありますか?

How much is this?
これはいくらですか?

Do you accept credit cards?
クレジットカードは使えますか?

Check, please.
お会計をお願いします

Could you give me a receipt?
領収書をお願いします

Taxi, please.
タクシーをお願いします

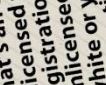
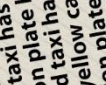
How long does it take?
時間はどのくらいかかりますか?

How much is the fare?
料金はどのくらいかかりますか?

Where is a restroom?
トイレはどこですか?

Taking an unlicensed taxi is illegal.

What's an unlicensed taxi?
A licensed taxi has green car registration plate however, an unlicensed taxi has white or yellow car registration plate. Please check registration plate and take a licensed taxi.



Sukuji Beach

Kabira Bay

Yonehara Beach

Inoda Auto Camping Ground

Tamatorizaki Observatory

Ishigaki Air Port

Hirakubozaki Lighthouse

Banna Observation Point

Ryukyu Kannonzaki Lighthouse / Toujinhaka

National Astronomical Observatory of Japan VERA Ishigaki-jima Station

Uganzaki Astronomical Observatory

Distance: 19Km
Traveling time: 40minutes
About 3800yen

Distance: 18Km
Traveling time: 40minutes
About 3500yen

Distance: 20Km
Traveling time: 40minutes
About 3800yen

Distance: 26Km
Traveling time: 30minutes
About 4000yen

Distance: 17Km
Traveling time: 30minutes
About 2800yen

Distance: 8Km
Traveling time: 20minutes
About 1600yen

Distance: 8Km
Traveling time: 20minutes
About 1600yen

Distance: 19Km
Traveling time: 40minutes
About 3800yen

Distance: 18Km
Traveling time: 40minutes
About 3500yen

Distance: 20Km
Traveling time: 40minutes
About 3800yen

Distance: 26Km
Traveling time: 30minutes
About 4000yen

Distance: 17Km
Traveling time: 30minutes
About 2800yen

Distance: 8Km
Traveling time: 20minutes
About 1600yen

Distance: 8Km
Traveling time: 20minutes
About 1600yen

Distance: 19Km
Traveling time: 40minutes
About 3800yen

Distance: 18Km
Traveling time: 40minutes
About 3500yen

Distance: 20Km
Traveling time: 40minutes
About 3800yen

Distance: 26Km
Traveling time: 30minutes
About 4000yen

Distance: 17Km
Traveling time: 30minutes
About 2800yen

Distance: 8Km
Traveling time: 20minutes
About 1600yen

Distance: 8Km
Traveling time: 20minutes
About 1600yen

Distance: 19Km
Traveling time: 40minutes
About 3800yen

Distance: 18Km
Traveling time: 40minutes
About 3500yen

Distance: 20Km
Traveling time: 40minutes
About 3800yen

Distance: 26Km
Traveling time: 30minutes
About 4000yen

Distance: 17Km
Traveling time: 30minutes
About 2800yen

Distance: 8Km
Traveling time: 20minutes
About 1600yen

Distance: 8Km
Traveling time: 20minutes
About 1600yen

Distance: 19Km
Traveling time: 40minutes
About 3800yen

Distance: 18Km
Traveling time: 40minutes
About 3500yen

Distance: 20Km
Traveling time: 40minutes
About 3800yen

Distance: 26Km
Traveling time: 30minutes
About 4000yen

Distance: 17Km
Traveling time: 30minutes
About 2800yen

Distance: 8Km
Traveling time: 20minutes
About 1600yen

Distance: 8Km
Traveling time: 20minutes
About 1600yen

Distance: 19Km
Traveling time: 40minutes
About 3800yen

Distance: 18Km
Traveling time: 40minutes
About 3500yen

Distance: 20Km
Traveling time: 40minutes
About 3800yen

Distance: 26Km
Traveling time: 30minutes
About 4000yen

Distance: 17Km
Traveling time: 30minutes
About 2800yen

Distance: 8Km
Traveling time: 20minutes
About 1600yen

Distance: 8Km
Traveling time: 20minutes
About 1600yen

Distance: 19Km
Traveling time: 40minutes
About 3800yen

Distance: 18Km
Traveling time: 40minutes
About 3500yen

Distance: 20Km
Traveling time: 40minutes
About 3800yen

Distance: 26Km
Traveling time: 30minutes
About 4000yen

Distance: 17Km
Traveling time: 30minutes
About 2800yen

Distance: 8Km
Traveling time: 20minutes
About 1600yen

Distance: 8Km
Traveling time: 20minutes
About 1600yen

Distance: 19Km
Traveling time: 40minutes
About 3800yen

Distance: 18Km
Traveling time: 40minutes
About 3500yen

Distance: 20Km
Traveling time: 40minutes
About 3800yen

Distance: 26Km
Traveling time: 30minutes
About 4000yen

Distance: 17Km
Traveling time: 30minutes
About 2800yen

Distance: 8Km
Traveling time: 20minutes
About 1600yen

Distance: 8Km
Traveling time: 20minutes
About 1600yen

Distance: 19Km
Traveling time: 40minutes
About 3800yen

Distance: 18Km
Traveling time: 40minutes
About 3500yen

Distance: 20Km
Traveling time: 40minutes
About 3800yen

Distance: 26Km
Traveling time: 30minutes
About 4000yen

Distance: 17Km
Traveling time: 30minutes
About 2800yen

Distance: 8Km
Traveling time: 20minutes
About 1600yen

Distance: 8Km
Traveling time: 20minutes
About 1600yen

Distance: 19Km
Traveling time: 40minutes
About 3800yen

Distance: 18Km
Traveling time: 40minutes
About 3500yen

Distance: 20Km
Traveling time: 40minutes
About 3800yen

Distance: 26Km
Traveling time: 30minutes
About 4000yen

Distance: 17Km
Traveling time: 30minutes
About 2800yen

Distance: 8Km
Traveling time: 20minutes
About 1600yen

Distance: 8Km
Traveling time: 20minutes
About 1600yen

Distance: 19Km
Traveling time: 40minutes
About 3800yen

Distance: 18Km
Traveling time: 40minutes
About 3500yen

Distance: 20Km
Traveling time: 40minutes
About 3800yen

Distance: 26Km
Traveling time: 30minutes
About 4000yen

Distance: 17Km
Traveling time: 30minutes
About 2800yen

Distance: 8Km
Traveling time: 20minutes
About 1600yen

Distance: 8Km
Traveling time: 20minutes
About 1600yen

Distance: 19Km
Traveling time: 40minutes
About 3800yen

Distance: 18Km
Traveling time: 40minutes
About 3500yen

Distance: 20Km
Traveling time: 40minutes
About 3800yen

Distance: 26Km
Traveling time: 30minutes
About 4000yen

Distance: 17Km
Traveling time: 30minutes
About 2800yen

Distance: 8Km
Traveling time: 20minutes
About 1600yen

Distance: 8Km
Traveling time: 20minutes
About 1600yen

Distance: 19Km
Traveling time: 40minutes
About 3800yen

Distance: 18Km
Traveling time: 40minutes
About 3500yen

Distance: 20Km
Traveling time: 40minutes
About 3800yen

Distance: 26Km
Traveling time: 30minutes
About 4000yen

Distance: 17Km
Traveling time: 30minutes
About 2800yen

Distance: 8Km
Traveling time: 20minutes
About 1600yen

Distance: 8Km
Traveling time: 20minutes
About 1600yen

Distance: 19Km
Traveling time: 40minutes
About 3800yen

Distance: 18Km
Traveling time: 40minutes
About 3500yen

Distance: 20Km
Traveling time: 40minutes
About 3800yen

Distance: 26Km
Traveling time: 30minutes
About 4000yen

Distance: 17Km
Traveling time: 30minutes
About 2800yen

Distance: 8Km
Traveling time: 20minutes
About 1600yen

Distance: 8Km
Traveling time: 20minutes
About 1600yen

Distance: 19Km
Traveling time: 40minutes
About 3800yen

Distance: 18Km
Traveling time: 40minutes
About 3500yen

Distance: 20Km
Traveling time: 40minutes
About 3800yen

Distance: 26Km
Traveling time: 30minutes
About 4000yen

Distance: 17Km
Traveling time: 30minutes
About 2800yen

Distance: 8Km
Traveling time: 20minutes
About 1600yen

Distance: 8Km
Traveling time: 20minutes
About 1600yen

Distance: 19Km
Traveling time: 40minutes
About 3800yen

Distance: 18Km
Traveling time: 40minutes
About 3500yen

Distance: 20Km
Traveling time: 40minutes
About 3800yen

Distance: 26Km
Traveling time: 30minutes
About 4000yen

Distance: 17Km
Traveling time: 30minutes
About 2800yen

Distance: 8Km
Traveling time: 20minutes
About 1600yen

Distance: 8Km
Traveling time: 20minutes
About 1600yen

Distance: 19Km
Traveling time: 40minutes
About 3800yen

Distance: 18Km
Traveling time: 40minutes
About 3500yen

Distance: 20Km
Traveling time: 40minutes
About 3800yen

Distance: 26Km
Traveling time: 30minutes
About 4000yen

Distance: 17Km
Traveling time: 30minutes
About 2800yen

Distance: 8Km
Traveling time: 20minutes
About 1600yen

Distance: 8Km
Traveling time: 20minutes
About 1600yen

Distance: 19Km
Traveling time: 40minutes
About 3800yen

Distance: 18Km
Traveling time: 40minutes
About 3500yen